



EAGAN HEIGHTS

— APARTMENTS —

3340 PILOT KNOB ROAD | EAGAN, MN 55121

651-650-3345

EAGANHEIGHTS@CONDORMGT.COM

EAGANHEIGHTS.COM

[FLOORPLANS](#) | [AMENITIES](#) | [PHOTOS](#) | [NEIGHBORHOOD](#)



FLOOR PLANS

APARTMENT FINISHES

STUDIO

1 BED

1 BED + DEN

2 BED

Eagan Heights residences are crafted to make life easy, comfortable, and beautiful! Enjoy all the in-home amenities you've always dreamed of and even the ones you never knew you wanted. We've thought of everything, so you can simply sit back and enjoy a new level of living.

Apartments feature:

- 9' ceilings
- Patio or balcony**
- Oversized windows
- Window coverings
- Wood-inspired plank flooring
- Carpeted bedrooms and dens
- White doors and millwork
- 3-panel Craftsman doors
- Crown molding
- Dry bar with wine rack*
- Front-loading full size stacked laundry
- Front door smart lock technology
- Central heating and cooling
- Programmable thermostats
- 300 mbps high speed internet
- Dimmer light switches
- Overhead lighting throughout
- LED lighting

Bedrooms feature:

- Walk-in closets
- Private baths*

Bathrooms feature:

- Granite-topped vanities
- Rain showerhead fixture
- Wide soaking tub/shower
- Double Sinks*
- Closet access*
- Bedrooms access*
- Walk-in closets

Kitchens feature:

- Open-concept gourmet design
- Coffee-stained cabinetry
- Shaker-style cabinet doors
- Granite countertops
- Islands or peninsulas for seating*
- Stainless steel, energy efficient appliances
- Fridge with ice maker
- High-arc kitchen faucet
- Windows*
- Free standing island with shelving*

*In most homes
(excluding studios and A4 plans)



APARTMENT FINISHES



CABINET



KITCHEN GRANITE



VANITIES GRANITE



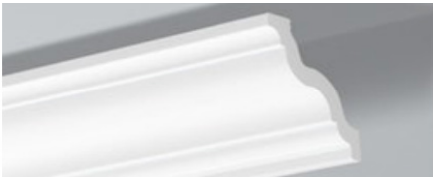
CRAFTSMAN DOORS



LED LIGHTING



CARPET



TRIM CROWN MOLDING



PLANK FLOORING



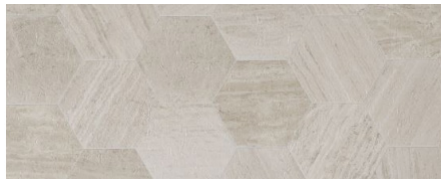
STAINED WOODWORK



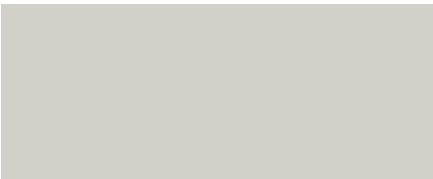
FRONT DOOR SMART LOCKS



FRONT DOOR SMART LOCKS



BATHROOM



PAINT COLOR



TYPICAL KITCHENS & SEATED ISLAND



WIDE SOAKING TUB/SHOWER



DIMMER SWITCHES



RAIN SHOWER
HEAD FIXTURE



KITCHEN FAUCET



STAINLESS STEEL
APPLIANCES



FRONT LOADING
STACKED W/D

STUDIO LAYOUTS

SKY(S3)

415 SQUARE FT



\$1,070 - \$1,115

SPARROW (S1)

443 SQUARE FT



\$1,150 - \$1,200

ONE BEDROOM LAYOUTS

ARROW (S2)

623 SQUARE FT



\$1,360 - \$1,460

AIR (S5 ADA)

623 SQUARE FT



\$1,400

ACE (A1)

711 SQUARE FT



\$1,475 - \$1,580

ONE BEDROOM LAYOUTS

AERO (A5 ADA)

711 SQUARE FT



\$1,520

AVIA (A4)

738 SQUARE FT



\$1,480 - \$1,540

ONE BEDROOM + DEN LAYOUTS

BARRON (A3)

831 SQUARE FT



\$1,650 - \$1,720

BASSET (A2)

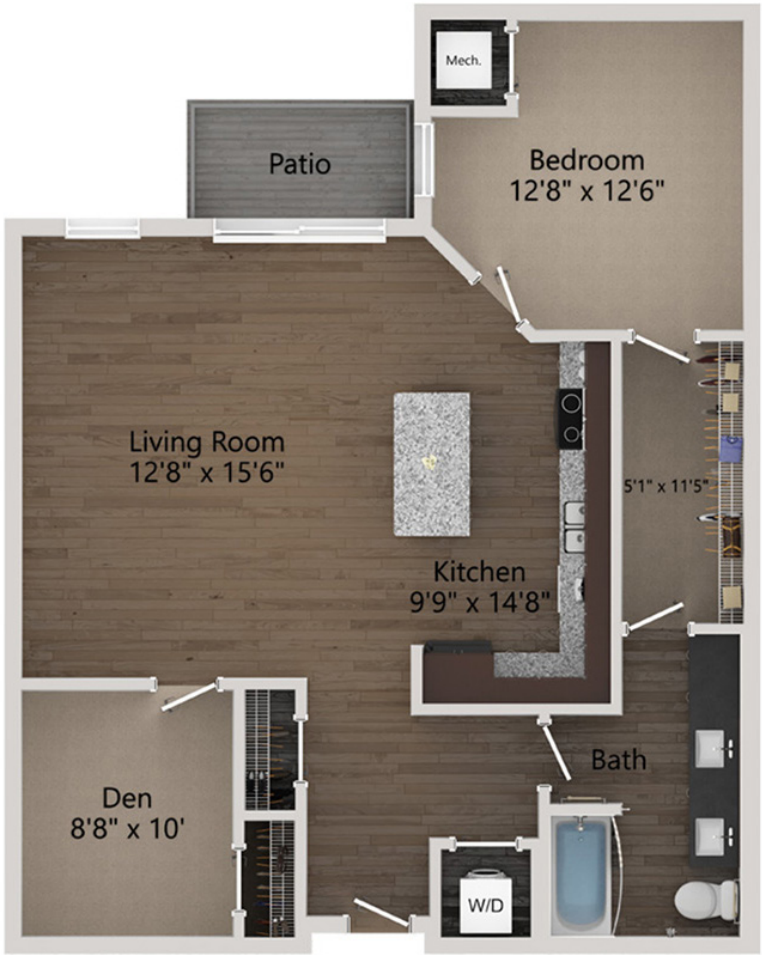
900 SQUARE FT



\$1,700 - \$1,770

BELL (B2)

1,003 SQUARE FT

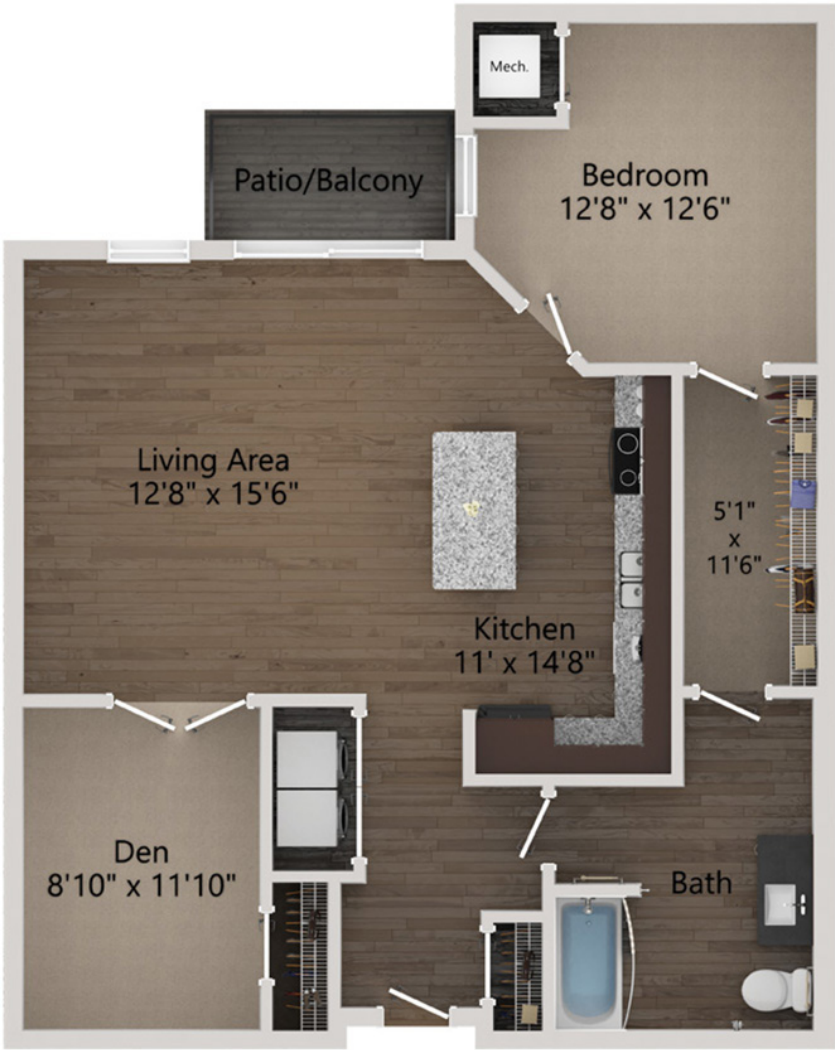


\$1,810 - \$1,895

ONE BEDROOM + DEN LAYOUTS

BERNARD (B3 ADA)

1,003 SQUARE FT



\$1,805

BRISTOL (B1)

1,023 SQUARE FT



\$1,810 - \$1,895

TWO BEDROOM LAYOUTS

DOVE (C5)

936 SQUARE FT



\$1,870 - \$1,945

EAGLET (C6)

1,087 SQUARE FT



\$2,000 - \$2,080

FALCON (C7)

1,087 SQUARE FT



\$2,000 - \$2,080

TWO BEDROOM LAYOUTS

HAWKER (C4)

1,114 SQUARE FT



\$2,100 - \$2,145

KESTREL (C9 ADA)

1,114 SQUARE FT



\$2,185

MERLIN (C3)

1,163 SQUARE FT



\$2,200 - \$2,310

TWO BEDROOM LAYOUTS

PIPER (C1)

1,199 SQUARE FT



\$2,265 - \$2,310

ROBIN (C2)

1,263 SQUARE FT



\$2,315 - \$2,360

CONDOR (C8)

1,196 SQUARE FT



\$2,150

AMENITIES

Elevate your every day with thoughtfully-crafted amenities. Save on fitness memberships, pool passes, and coworking spaces by taking advantage of complimentary extras! From the fitness facilities to the pet spa and more, Eagan Heights' amenities are considered an extension of your home — offering you a 360 living experience.

ALL AMENITIES

PEAK FITNESS ROOM

ELEVATE YOGA STUDIO

PINNACLE WORKSPACE

POOL AND OUTDOOR

LOUNGE

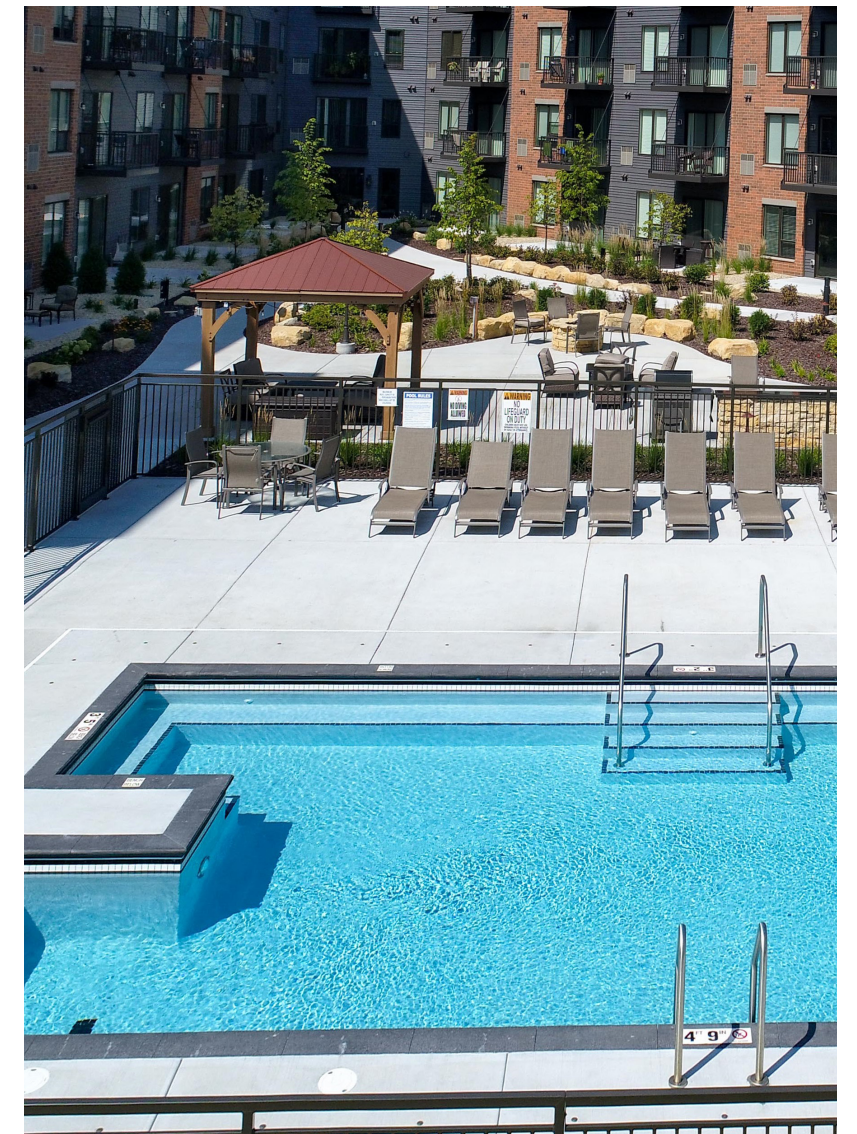
PET SPA + DOG RUN

Indoors

- 2-story lobby with seating and grand staircase
- 24/7 complimentary coffee bar
- PINNACLE: Remote workspace with conference area
- Free high-speed wifi in all amenities
- APEX: Club room with fireplace, TV, shuffleboard, and wet bar
- SUMMIT: Entertainment lounge with kitchen and TV (capacity 20 - available for private rental)
- Social room with drybar and TV
- Community spaces (seating areas)
- ELEVATE: Yoga studio
- PEAK Fitness room
- Electric car charging
- 2 elevators
- Storage space options (up to 72 sq. ft.)
- Mail center with parcel room
- Pet grooming station
- Bike repair and storage room
- Bike storage in garage stalls
- Trash and recycling chutes
- Underground heated parking

Outdoors

- Landscaped community plaza
- Grilling station
- Lounge area with fire pit
- Swimming pool and sundeck
- Fenced dog run
- Guest parking



PEAK FITNESS ROOM

CHOOSE YOUR PACE

Imagine a boutique health club where every detail is carefully curated to help you optimize your fitness goals, no matter where you're starting. The best part? It's just steps from your door! Skip traffic and membership fees with the Peak Fitness Room, open 24/7 to fit your busy schedule.

- Plenty of space (954 square feet!)
- Variety of all-new cardio and strength training equipment
- Large windows with plaza view
- Multiples of several machines for better *availability*
- Open 24/7 for your convenience



RENDERINGS AND PHOTOS ARE INTENDED AS A GENERAL REFERENCE AS THE COMMUNITY IS STILL BEING BUILT

ELEVATE YOGA STUDIO

FIND YOUR ZEN

Inhale, then exhale. Whether you're a seasoned yogi or curious about starting a practice, Elevate Yoga Studio offers a calm retreat from the stresses of everyday life. Find balance and harmony without crowded classes. Take your wellness to new heights!

- Mats, blocks, balls, cables, and other equipment
- 2 bikes with free on demand fitness instruction
- Spacious room (554 square feet) with open floor area
- Large mirrored wall and several windows with plaza view
- Open 24/7 for your convenience



RENDERINGS AND PHOTOS ARE INTENDED AS A GENERAL REFERENCE AS THE COMMUNITY IS STILL BEING BUILT

PINNACLE WORK LOUNGE

WORK TO PLAY

Style, meet substance. Do your best work from the comfort of your own community! The sleekly designed Pinnacle Work Lounge is fully equipped with high-speed wifi, a conference area, and other modern coworking conveniences. Hang out at the coffee bar and network with neighbors, or enjoy more privacy in one of several remote workstations.

- Multiple workstations and seating areas + conference table
- Large room (637 square feet)
- Office copy and fax machine available
- Near 24/7 coffee bar
- Take a break in the next-door Clubroom with fireplace and shuffleboard



RENDERINGS AND PHOTOS ARE INTENDED AS A GENERAL REFERENCE AS THE COMMUNITY IS STILL BEING BUILT

OUTDOOR POOL & LOUNGE

MAKE A SPLASH

Pull out all the stops for your next summer get-together. Eagan Heights' outdoor pool and lounge boasts a spacious sundeck and a fully-equipped grilling station. Relax poolside while overlooking the manicured grounds of the community plaza.

- Heated pool
- Fully-equipped BBQ grill area
- Firepit with seating
- Outdoor yard games
- Large sundeck with plenty of seating options



RENDERINGS AND PHOTOS ARE INTENDED AS A GENERAL REFERENCE AS THE COMMUNITY IS STILL BEING BUILT

PET SPA & DOG RUN

RUFF IT

No detail is overlooked at Eagan Heights, and that includes premium amenities for our four-legged residents! Furry friends can enjoy outdoor time close to home at our premiere dog run. Or pamper your pet with peace of mind and without the groomer fees at the fully equipped pet spa.

- **Pet spa**

- Drying and grooming table
- Wash station

- **Dog run**

- 15 x 50' dog run with artificial turf
- Fully fenced



RENDERINGS AND PHOTOS ARE INTENDED AS A GENERAL REFERENCE AS THE COMMUNITY IS STILL BEING BUILT

YOUR COMMUNITY



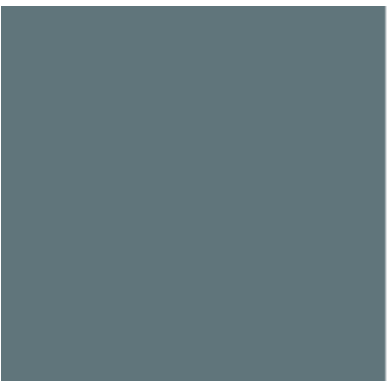
BUILDING FINISHES



TILE AT
COFFEE BAR



KITCHEN GRANITE



WORK LOUNGE
PANELING PAINT



WORK LOUNGE
PANELING DESIGN



ELEVATOR LOBBY
SCONCE



RECEPTION WALL
COVERING



ENTERTAINMENT LOUNGE
QUARTZ COUNTTOP



ENTERTAINMENT LOUNGE
TILE BACKSPLASH



CORRIDOR ARCHES



ELEVATOR LOBBY LIGHTING



LOBBY CEILING DESIGN



CLUBROOM CEILING DESIGN



CLUBROOM
FIREPLACE
UPPER TILE



CLUBROOM
FIREPLACE
LOWER TILE



FITNESS ROOM
BRICK ACCENT



FITNESS ROOM
ACCENT WALL
COVERING

YOUR HOME



YOUR NEIGHBORHOOD

Discover Eagan's Central Park district, a picturesque neighborhood with a charming midwestern ambiance. Situated minutes from downtown Minneapolis and Saint Paul, Central Park offers a wide array of modern conveniences combined with the exclusivity of a smaller community. Explore the outdoors by taking advantage of nearby walking and biking trails, or relax at Central Park's gazebo and pond. Whether you work from home or commute into the city, Central Park is the ideal location for any lifestyle.

